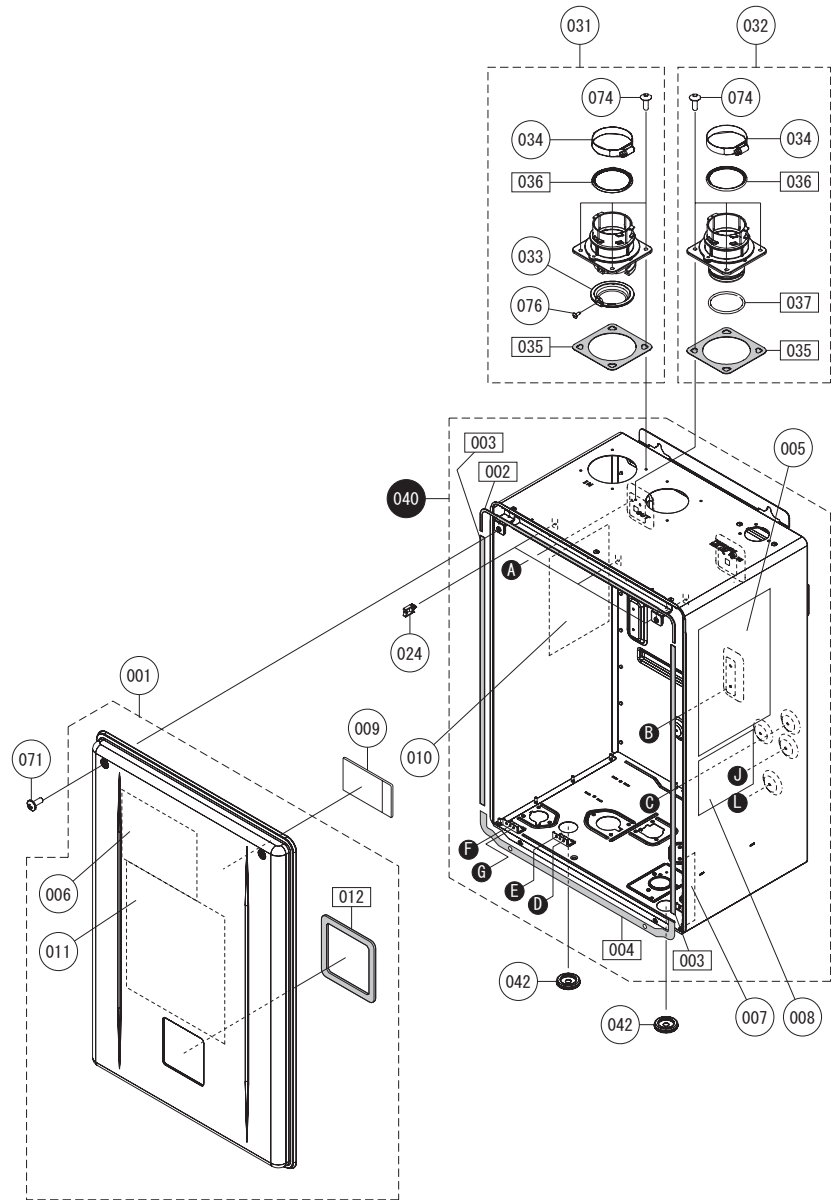


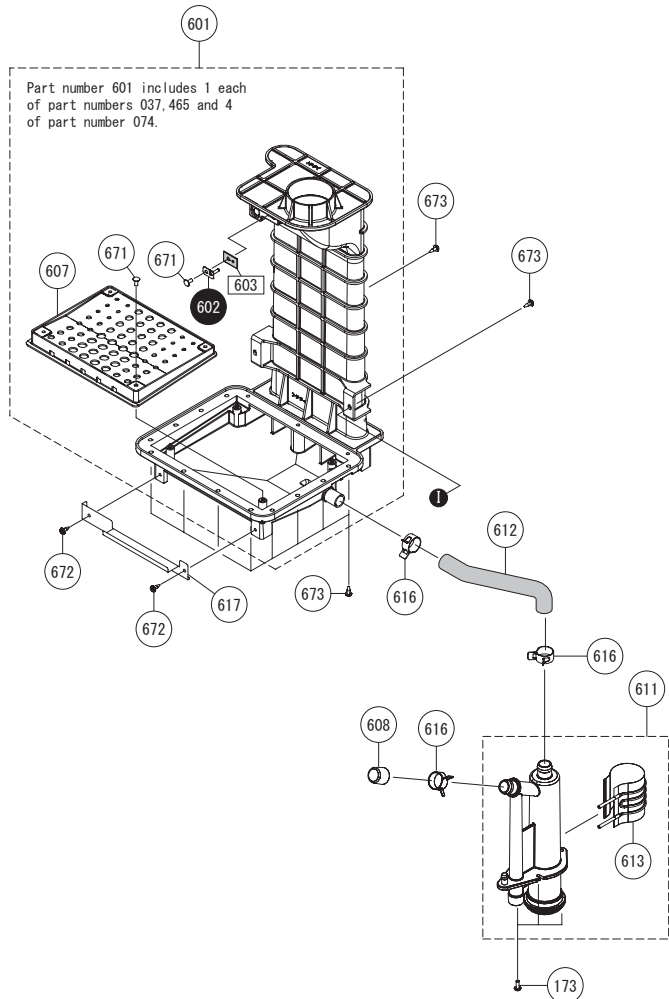
External outfitting NRCB199DV (GHQ-C3201WX-FF US)
NRCB180DV (GHQ-C2801WX-FF US)
PV199DV (GHQ-C3201WX-FF PB US)



External outfitting NRCB199DV (GHQ-C3201WX-FF US)
NRCB180DV (GHQ-C2801WX-FF US)
PV199DV (GHQ-C3201WX-FF PB US)

Part Nos.	Part Names	Order Nos.	Q'ty/unit
001	Front Cover - GHQ-C2801WX-FF US / GHQ-C3201WX-FF US	SKJ721P	1<NRCB Series>
002	Front Cover - GHQ-C3201WX-FF PB US	SKJ7226	1<PV Series>
003	Gasket - Front Cover Top	FABL011	1
004	Gasket - Front Cover Sides	CVAL004	2
005	Gasket - Front Cover Top and Bottom	AMPL015	1
006	Label - Outside Front Cover Caution Label	ELVK003	1
007	Label - Inside Front Cover Caution Label	EYSK006	1
008	Label - Terminal Block	FADK011	1
009	Label - Rating Plate UV	FADK151	1
010	Parts List/Technical sheet	FADK251	1
011	Label - Energy Guide 199kbtuh - LP	FADK006	1<NRCB199DV LP>
012	Label - Energy Guide 199kbtuh - NG	FADK007	1<NRCB199DV NG>
013	Label - Energy Guide 199kbtuh - LP	FDAK036	1<PV199DV LP>
014	Label - Energy Guide 199kbtuh - LP	FDAK037	1<PV199DV NG>
015	Label - Energy Guide 180kbtuh - LP	FAEK006	1<NRCB180DV LP>
016	Label - Energy Guide 180kbtuh - NG	FAEK007	1<NRCB180DV NG>
017	Wiring Diagram	FADK002	1
018	Gasket - Operation Panel	FADL001	1
019	Wire Clamp	7559402	3
020	Intake Flue w/ O-Ring and Gasket (SET)	SKJ7181	1
021	Exhaust Flue w/ O-Ring and Gasket (SET)	SKJ7182	1
022	Filter - Intake Air	FABF101	1
023	Clamp - Exhaust Pipe	FABF108	2
024	Gasket - Exhaust Flue	FABL101	2
025	O-Ring - Exhaust Pipe	FABL102	2
026	O-Ring - Exhaust Flue	FABL103	1
027	Case - GHQ-C32 (28)01WX-FF US	SKJ721P	1
028	Wire Grommet - Rubber	7355009	2
071	Screw - Front Cover with washer MAX12 S410		
074	Screw - Pre-Coated Machined MAX12 S410		
076	Screw - Remote Terminal MAX10 S430		

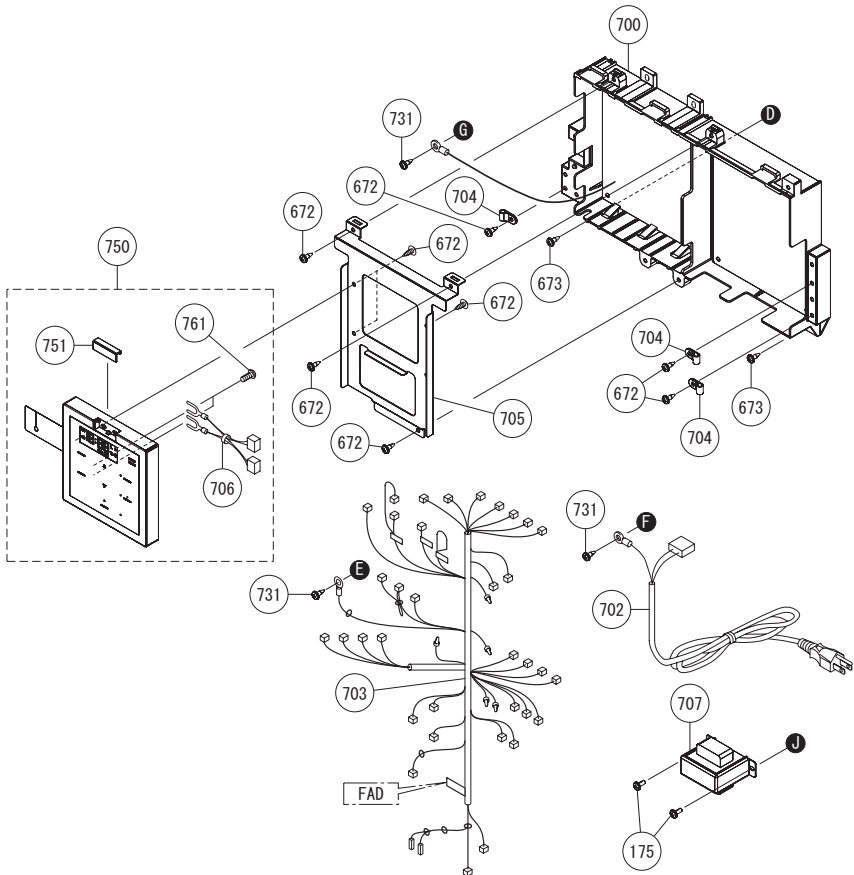
Condensate feed route NRCB199DV (GHQ-C3201WX-FF US)
NRCB180DV (GHQ-C2801WX-FF US)
PV199DV (GHQ-C3201WX-FF PB US)



Condensate feed route NRCB199DV (GHQ-C3201WX-FF US)
NRCB180DV (GHQ-C2801WX-FF US)
PV199DV (GHQ-C3201WX-FF PB US)

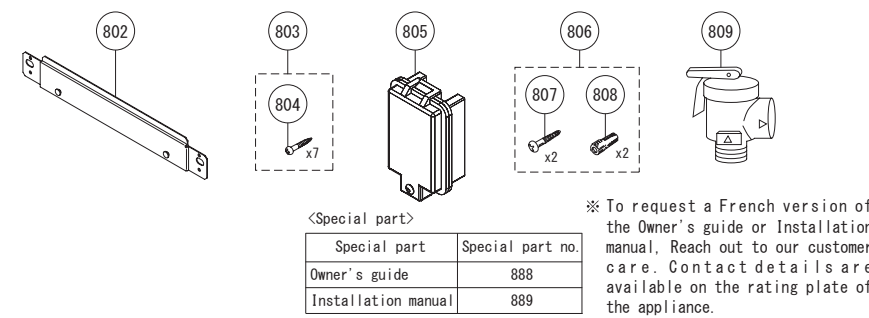
Part Nos	Part Names	Order Nos	Q'ty/unit
601	Exhaust Duct (SET)	SKJ721N	1
602	Thermistor - Exhaust	ETHR002	1
603	Gasket - Exhaust Thermistor	ETHL004	1
607	Condensate Drainage Plate	FABF035	1
608	Drain Cap	FABF056	1
611	Condensate Container (SET)	SKJ722C	1
612	Drain Hose - Exhaust Duct	FADF001	1
613	Freeze Prevention Heater - Condensate Container	ETHR004	1
616	Clamp - Condensate Hose NO.45	SAD6536	3
617	Mounting Plate - Circuit Board	FADN024	1
671	Screw - Medium Tapping M4X10 S410		
672	Screw - Remote Terminal Cover M4X12 S410		
673	Screw - Long Tapping M4X12 S410		

Electronic control unit
NRCB199DV (GHQ-C3201WX-FF US) • NRCB180DV (GHQ-C2801WX-FF US)
PV199DV (GHQ-C3201WX-FF PB US)



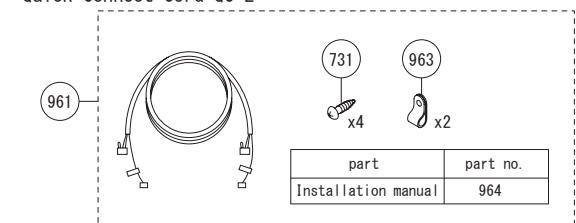
Included Accesories
NRCB199DV (GHQ-C3201WX-FF US) • NRCB180DV (GHQ-C2801WX-FF US)
PV199DV (GHQ-C3201WX-FF PB US)

Included Accesories

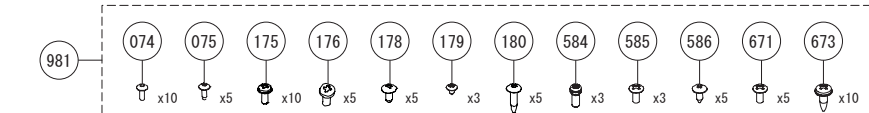


Optional Accesories

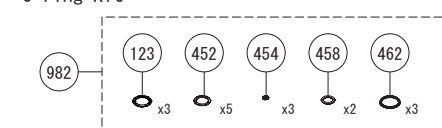
Quick-Connect Cord QC-2



Screw Kit

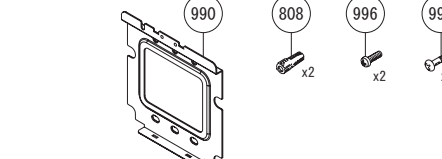


O-ring Kit



Relocating the Operation Panel to a remote location

* Please see instruction manual.



Electronic control unit and Included Accessories
NRCB199DV (GHQ-C3201WX-FF US) • NRCB180DV (GHQ-C2801WX-FF US)
PV199DV (GHQ-C3201WX-FF PB US)

Part Nos	Part Names	Order Nos	Q'ty/unit
700	Circuit Board	SKJ713S	1
702	Power Supply Cord	ERLU001	1
703	Wiring Harness - GHQ-C32 (28)01WX-FF US	SKJ725D	1
704	Wire Clamp - Nylon #4	7287909	3
705	Mounting Plate - Operation Panel	FADN022	1
706	Wiring Harness - Operation Panel	FADN016	1
707	Transformer	FADJ051	1
731	Screw - Small Tapping w/o collar M4X8 S410		
750	Operation Panel - RC-B201M (SET)	QNCJ035	1
751	Operation Panel Top Cover	QNCN003	1
761	Screw - Round Head Machine M3X6 S430		
800	Box - GHQ-C32 (28)01WX-FF US Box - GHQ-C3201WX-FF PB US Wall Mounting Plate Wood Screw Set7 Screw - Round Head Wood 4.8X38 S305	SKJ71XG SKJ722B FABA103 SAD2028	1<NRCB Series> 2<PV Series> 1 1 1
805	Outdoor Temperature Sensor	FADN001	1
806	Screw Package - Remote(SET)	QQUA100	1
807	Screw - Round Head Wood M4.1X25 S305		
808	Dry Wall AnchorsX25		
809	Pressure Relief Valve for Heating	FADN002	1
888	Owner's Guide - GHQ-C32 (28)01WX-FF US Owner's Guide - GHQ-C3201WX-FF PB US Installation Manual - GHQ-C32 (28)01WX-FF US Installation Manual - GHQ-C3201WX-FF PB US	SBB8009 SBB819H SBB800B SBB819J	1<NRCB Series> 1<PV Series> 1<NRCB Series> 1<PV Series>
961	Quick Connect Cord - QC-2	Q706377	1
962	Wire Clamp - Nylon #3	7223901	2
964	Installation Manual - QC-2	SA08992	1
981	Screw Kit	SKJ722N	1
982	O-Ring Kit	SKJ72N1	1
990	Wall Mounting Plate - Operation Panel	QNCN020	1
996	Screw - Round Head Machine M3X6		
997	Screw - Flat Head Wood M4.1X20		

Procedure for Flushing the Plate Heat Exchanger

This procedure is only intended for use by a qualified service professional or authorized Service Representative. Any unauthorized use of this procedure may result in voiding the warranty. Reach out to our customer care for additional support. Contact details are available on the rating plate of the appliance.

To prevent damage to the Plate Heat Exchanger from Scale Build-up, the Plate Heat Exchanger needs to be flushed* to remove the Scale Build-up.

Damage to the Combi Boiler due to Scale Build-up is not covered by the Combi Boiler's warranty.

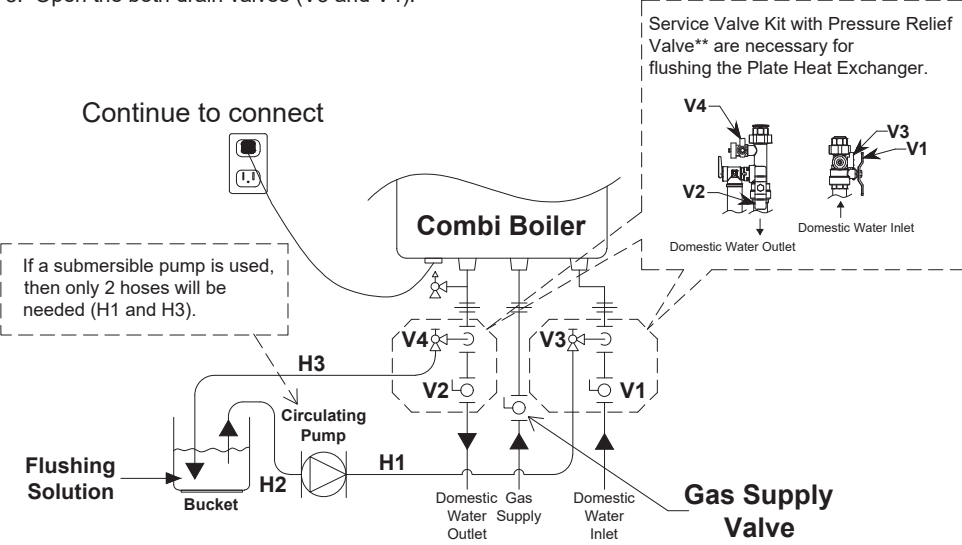
* Connect the blue connector marked "FLUSH" for flushing near the Circuit Board when flushing the Plate Heat Exchanger.

The Combi Boiler must remain connected to electrical power when flushing the Plate Heat Exchanger.

Basic Procedure

«Procedure 1. The preparation of the flushing system»

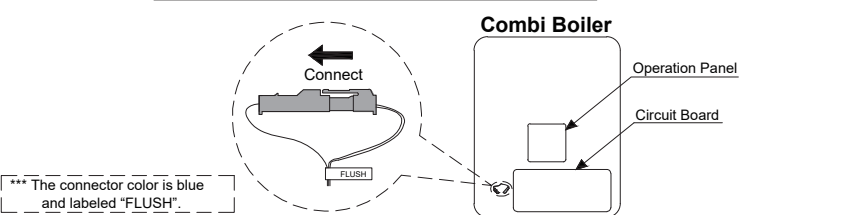
- Close the gas supply valve.
- Close the Domestic Water Inlet valve (V1) and the Domestic Water Outlet valve (V2).
- Connect the one drain hose (H1) to the drain valve (V3), and then the other to the circulating pump.
- Connect the drain hose (H2) to the circulating pump.
- Connect the drain hose (H3) to the drain valve (V4).
- Pour 1 gallon of "Calcium, Lime and Rust Removal Product" and 1 gallon water into the bucket. Recommend "Calcium, Lime and Rust Removal Product" for flushing.
- Place the both drain hoses (H2 and H3) into the bucket filled with the flushing solution.
- Open the both drain valves (V3 and V4).



** Service Valve Kit with Pressure Relief Valve may be purchased as an accessory from an authorized wholesaler. They allow for full diagnostic testing and easy flushing of the system. Refer to appliance's installation manual or reach out to our customer care, if more information is needed for flushing. Contact details are available on the rating plate of the appliance.

«Procedure 2. Flushing the Heat Exchanger - For Single Unit»

- Open the Front Cover.
- Connect the blue connector*** marked "FLUSH" for flushing near the Circuit Board.



- Then the code "CCC" is displayed on the Operation Panel.
- Turn on the circulating pump to circulate the flushing solution through the Combi Boiler for 1 hour at a rate of 1.5 gallons per minute or more.
- The code "C60" is displayed on the Operation Panel when the Combi Boiler detects the flow of the flushing solution. When 1 minute passes, the code "C59" will change to "C59" on the Operation Panel.
- When 1 hour passes, the code "C00" is flashing on the Operation Panel. Do not disconnect the blue connector marked "FLUSH" for flushing.
- Turn off the circulating pump.

«Procedure 3. Cleaning the Heat Exchanger»

The flushing solution needs to be rinsed and cleaned out of the Combi Boiler.

Below is the way to rinse and clean the flushing solution.

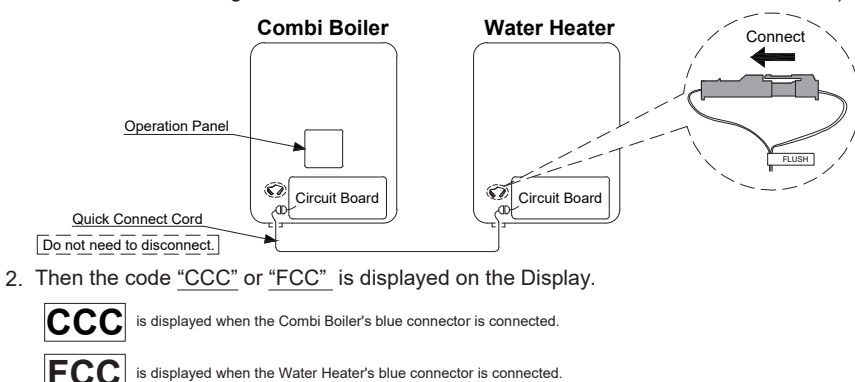
- Remove both drain hoses (H2 and H3) from the bucket. And then place the drain hose (H3) into the sink or outside to drain.
- Close the drain valve (V3) and then open the Domestic Water Inlet valve (V1). Do not open the Domestic Water Outlet valve (V2).
- Clean the Combi Boiler with fresh water for 3 minutes or more. (Needs to have enough time to clean the Combi Boiler.)
- Close the drain valve (V4) and then remove the drain hose (H3) from the drain valve (V4).
- Remove the drain hose (H1) from the drain valve (V3).
- Disconnect the blue connector marked "FLUSH" for flushing. The code "C00" goes out on the Operation Panel.

- Close the Front Cover.
- Open the gas supply valve and Domestic Water Outlet valve (V2).
- Check for correct operation of the Combi Boiler.

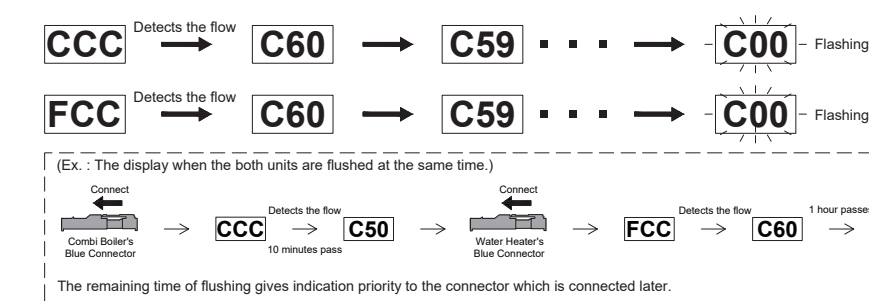
In case of the "Quick Connect Multi System Procedure"

Note: Refer to the Water Heater's Parts List Sheet for the Water Heater's preparation of the flushing system.

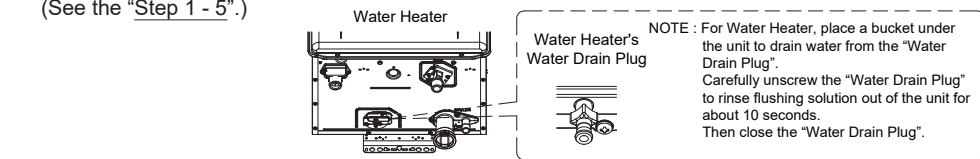
- Connect the blue connector marked "FLUSH" for unit needing to be flushed. (The unit is isolated from Quick Connect Multi System when the blue connector marked "FLUSH" for flushing is connected. Not need to disconnect the Quick Connect Cord.)



- Turn on the circulating pump to circulate the flushing solution through the units for 1 hour at a rate of 1.5 gallons per minute or more.
- When 1 hour passes, the code "C00" is flashing on the Display. Do not disconnect the blue connector marked "FLUSH" for flushing.



- Turn off the circulation pump.
- Rinse and clean the flushing solution out of the units in accordance with "Procedure 3". (See the "Step 1 - 5".)



- Disconnect the blue connector marked "FLUSH" for flushing. The Code "C00" goes out on the Operation Panel.
- Close the Front Covers.
- Open the gas supply valves and water outlet valves.
- Check for correct operation of the units.

Refer to appliance's installation manual or reach out to our customer care, if more information is needed for flushing. Contact details are available on the rating plate of the appliance.